

DAIRY & FARM RETIREMENT AUCTION



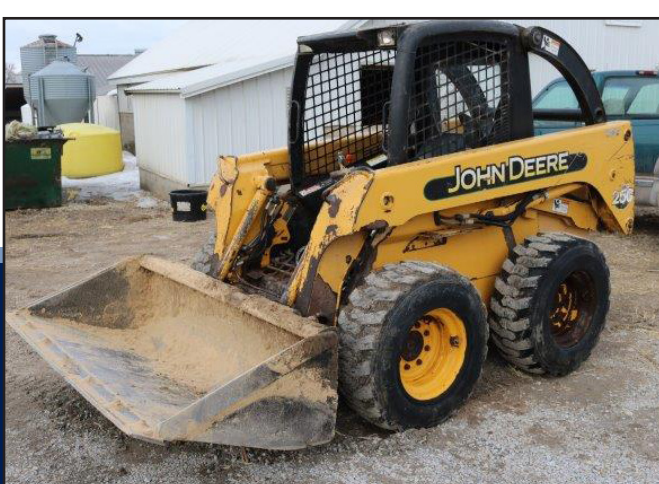
Saturday, March 28th, 2020 at 9:00 AM

Greg & Kathy Corkery - Owners

1083 288th St. • Jesup, Iowa

Contact Greg @ 319-415-1172 for questions.

**LIVE & ONLINE
AUCTION**



Live and Online Auction. After 38 years in dairy business Greg and Kathy have decided to enjoy the good life. Complete dispersal of all equipment. Offering 3 tractors, skid steer, chopper & forage equipment. Everything sells to the highest bidder. Save the date. 5% buyers fee for online buyers only.

TRACTORS & SKID STEER

1973 John Deere 4430 tractor w/ duals, cab, 2 wd, 18.4-38 tires, quad range, 8 front weights, 3 pt., 2-way hydr, 10% rubber, rear wheel weights, 540/1000 pto, 8000 hours on meter, 4000 on overhaul, s/n 4430-002647R

1981 John Deere 4440 tractor, cab, 2 wd, 18.4-38 tires, 3 pt., 2-way hydr, quad range, 540/1000 pto, 1500 hrs. on over haul, 13,000 hours on meter, inner rear wheel weights, s/n 4440H049028R

1964 John Deere 4020 tractor w/ JD 46A loader, 2 wd, New 18.4-34 tires, 3 pt., 2-way hydr. 540/1000 pto, power shift, hours unknown, s/n 4020-21T75369

2002 John Deere 250 skid steer loader w/ bucket, good rubber, 7200 hours, 4800 on meter / 2400 on old meter, s/n KV0250A450299

John Deere 46A loader bucket

COMBINE & HEADS

1982 John Deere Turbo 6620 Hydrostatic combine, 28L-26 tires, stalk chopper & spreader, 5,013 hours, s/n 505844, wood bin extensions

John Deere 444 - 36" - 4 Row head, s/n 472979

1991 John Deere 920 - 20' grain platform, s/n H00920F646012

Etherell single axle 20' head transport

FORAGE EQUIPMENT

1991 John Deere 5830 forage harvester, self-propelled, 4 wd, Lancaster spout, 200 hours on overhauled motor, (\$20,000 on overhaul 2019), 4087 on hour meter, kernel processor, earlage kit, 23.1-26 front tires, 11-23 rear tires, metal detector, s/n E05830X892990

1997 John Deere 664 - 30" - 4 row corn head

John Deere 7' CD Windrow hay pick up, s/n E000HPS300101

John Deere 3 row, 36" corn head

John Deere 2 row, 36" corn head, MDL 36" 2RRC HARV Unit, s/n E000RCX962725

John Deere 716A forage wagon w/JD 1275 12-T tandem axle gear, s/n 013681W

John Deere 716A forage wagon w/JD 1275 12-T tandem axle gear, s/n 011134W

John Deere 714A forage wagon w/JD1275 12-T tandem axle gear

John Deere 714A forage wagon w/JD 1275 12-T gear, s/n W00714A013123

H & S Super 7 + 4 forage wagon w/JD 1275 12-T tandem axle gear, s/n 302428

H & S Twin Auger HD forage wagon w/H & S 410/612 - 12-T tandem axle gear, s/n 891951

John Deere 3950 forage harvester with hay pick up, \$1600 dollars spent on auger updates, s/n E03950X800772

4 Bergman speed hitches'

TRUCKS & TRAILERS

1998 Chevy 2500 reg. cab truck, 6.5-liter diesel, 178,273 miles, Vin # 1GCGK24F9W7236508

1997 Chevy 2500 regular cab truck, 6.5-liter diesel, 180,000 miles, DMI bumper & hitch, 5th wheel bed hitch, Vin # 1GCGK24FXVZ209834

10' Bumper hitch 10' skid steer trailer w/ b-tail & fold down ramps

1982 Stocker 20' livestock trailer, side door, tandem axle, Vin # 480GNS15405

IMPLEMENTS

1981 John Deere 7000 8 row, 36" planter, front fold, Dickie John planter monitor, single fertilizer opener, Yetter residue manager, insecticide boxes, 4) 70-gallon fert. Tanks

John Deere 7000 rigid frame custom made 15R15 soybean planter w/ coulter openers & row markers

Kuhn Knight Pro Twin 8124 tandem axle dry manure spreader, side discharge, s/n D0022

Massey Ferguson 620 - 19' disk, manual fold, tandem axle

Glenco 12' - 9 shank soil conditioner w/ 6 spring harrow

International 29' field cultivator, 45 Vibra Shank, John Deere 3 bar long tine harrow

Hiniker 5000 - 8 row, 36" row crop cultivator, s/n 1373-100

2 - J & M 350 gravity wagon w/ J & M 12-ton gears - 1 w/ truck tires

Brent 350 bu. Gravity wagon w/ Westendorf gear

Flow EZ model 220 gravity wagon w/ 8-ton gear

Bear Cat 950 - mixer grinder, 2 1/2 ton

Demco 1000-gallon sprayer w/ 60' boom, Raven 440 sprayer monitor, tandem axle

1000-Gallon water tank on tandem axle trailer

1000-Gallon liquid fertilizer tender tank on tandem axle trailer

Massey Ferguson silage blower

7 Knife liquid fertilizer applicators, 36" rows, 2) 250-gallon saddle tanks

8 Row custom made residue manager w/ Littleston trash whips on IH tool bar, hydr. Fold

14' Cultipacker

Snowco 8" x 60' auger, pto

Snowco 8" x 56' auger, pto

Snowco 8" x 30' hydraulic drive transfer auger

GT grain cleaner, model FC1580 Roto grain leaner

Fanning mill w/ electric motor

Air Compressor

HAY EQUIPMENT

2005 New Holland 1431 Discbine conditioner mower, newer crimper rolls, s/n 1191515

Remlinger Series 600 skid steer mount round bale slicer, s/n 15538

Sitrex ST-520-H 4 basket hay tedder, 540 pto

16" Bale wagons w/ 12-ton gears & throw racks

Gooseneck tandem dual axle - 8 to 12 Round bale transport

John Deere 336 small square baler

John Deere 5 bar hay rake, s/n 464342

IH 1100 - 7' sickle mower

MILKING EQUIPMENT

2 - DEC Dari-Kool stainless 1000-gallon milk tanks w/ compressors

14 Companion Boumatic automatic take-off / detachers w/ milk yield indicator

30 Gallon stainless pasteurizing tank w/ Future Design DR5000 circular chart recorder

Boumatic model N53SC05 - 5" x 18" In-line milk Chiller, 53 plate, s/n 0518

3" stainless receiving tank / jar



BACKES
AUCTIONEERS & REALTY

800 - 876 - 8070

WWW.BACKES-AUCTION.COM | RAYMOND, IA

TERMS: Full payment via cash or certified funds. Checks must be accompanied by a current bank letter of credit. No property removed until fully settled for. After the auctioneer has sold a piece of equipment, it becomes the sole responsibility of the purchaser. Any announcement made day of sale takes precedence over printed material. Everything sells as is, where is. No warranties. No guarantees.

NOTE: The information contained in this brochure is subject to inspection and verification by all parties relying on it. No liability for its accuracy, errors, or omissions is assumed by the representatives of the seller, or Backes Auctioneers.