

VEHICLES, SKID STEER, HOIST, TIRE & SHOP EQUIP AUCTION

SMITTY'S INC.

314 W. MAIN ST – MANCHESTER, IA

FRIDAY MAY 8, 2015 @ 10:00 AM

Selling for secured creditors. Offering a great selection of excellent vehicles, skid steer, tire & shop equipment. 300+ new truck, car, fork truck & skid steer tires! Mark your calendars. Sales tax applies to all purchases. 10% buyer's fee

CAMARO, TRUCKS, CUBE TRUCKS

- 2011 Chevy Camaro SS red convertible, auto, leather bucket seats, only 1071 miles! VIN # 2G1FK3DJ5B9182580 - Showroom Cond! Sells w/ bank approval.
- 2011 Chevy 3500 LT single dual axle 12' stake bed truck, auto, 74,026 miles, Hydraulic end gate, VIN # 1GB3C0CG5BF172073
- 2008 Chevy 1500 Silverado reg cab truck, 2 wd, auto, 108,680 miles, Eagle end lift Dee Zee alum side tool boxes, VIN # 1GCEC14X78Z207423
- 2008 Chevy 1500 Silverado regular cab truck, 2 wd, auto, 195,656 miles, Appliance rack, VIN # 1GCEC14X78Z207423
- 2006 Chevy 1500 Silverado regular cab truck, 2wd, auto, 100,051 miles, Appliance rack, VIN # 3GCEC14X26G164008
- 2009 Hyundai Elantra 4 door sedan, bucket seats, auto, 44,379 miles
- 2009 Hyundai Elantra 4 door sedan, bucket seats, auto, 33,693 miles, VIN # KMHDU46D19U681813
- 2009 Hyundai Elantra 4 door sedan, bucket seats, auto, 117,735 miles, VIN # KMHDU46DX9U702433
- 2004 Chevy 1500 Silverado regular cab truck, 2wd, auto, 104,962 miles, Dee Zee alum side tool boxes & head ache rack, VIN # 1GCEC14XX4Z276472
- 2003 Chevy S10 LS ext. cab truck, auto, bucket seats, VIN # 1GCCS19H338112688
- 1998 Ford E350 Cutaway truck w/ Utilimaster 15' box w/ rear roll up door, single dual axle 223,728 miles,
- 1998 Ford E350 Cutaway truck w/ Supreme 15' box w/ rear roll up door, single dual axle 277,530 miles, VIN # 1FDWE37L2WHA88436
- 1995 Ford E350 Cutaway truck w/ Supreme 15' box w/ roll up rear door, single dual axle 280,446 miles, VIN # 1FDKE37G3SHA58943
- 1971 42' storage van trailer

SKID STEER

- 1998 Mustang 2040 Skid Steer loader, 40 hp, 1,674 hours, s/n SF98H002604
- Skid steer pallet forks

HOIST & ALIGNMENT

- John Bean Visualizer Pro 32 - 4 wheel alignment system w/ dual visual towers
- Rotary 14,000# 4 post hoist w/ 2 - 7,000# center roll jacks, turn plates, 21' runway
- Rotary SMO14N001 14,000# 4 post hoist w/ 2 - 7,000# center roll jacks, 18' runways, s/n KGI09F0017
- Rotary SMO14N001 14,000# 4 post hoist w/ 2 - 7,000# center roll jacks, 18' runways, s/n KGI11D0007
- Rotary ARO14N001 14,000# 4 post hoist, 2 - 7000# center roll jacks, 18' runways, front turn plates, s/n# KFF07H0011
- Rotary SMO14N000 14,000# 4 post hoist, 2 - 7,000# center roll jacks, 15' runways, s/n KGH08J002
- Rotary SMO14M002 14,000# 4 post hoist, 2 - 7,000# center roll jacks, 18' runways, s/n KGJ07K0009
- Rotary SMO14N000 14,000# 4 post hoist, 2 - 7,000# center roll jacks, 15' runways, s/n KGH08J0001

APPLIANCE RELATED

- 2 Yellow Jacket refrigeration gauges; Presto-O-Lite torch set; 3 Robinair Vacuum pumps; TIF 9000 charging scale; Promax Minimax recovery unit; 2 Dial A Charge cylinder tubes; 7 Appliance carts; Assorted appliance parts inventory, motor, belts, ice maker kits, filters, range & dryer cords, misc. related items; 2 - 4 wheel shop carts; 10 Refrigeration recovery tanks; 15 used appliances - washers, dryer, & refrigerators; 8' & 10' Wood work tables

TIRES & TIRE EQUIPMENT

- 300 + New car, truck, fork trucks & skid steer tires - all manufactures
- Branick Nitrogen model 500 fill & storage tank
- Corghy Model Master 26 rim clamp tire changers
- 2 - Coats 5040E rim clamp tire changer
- John Beam tire changer
- Coats XR1800 digital wheel balancer, s/n 0803308514
- John Bean BFH1000 digital wheel balancer - Opti-Line Full Correction
- Coats Balance mate adapter rack
- 2 Wheel weight cabinets w/ inventory
- JBC 600 Series brake & rotor lathe w/ extra dies
- Ammco 4000 brake & rotor lathe w/ extra dies

TIRE RELATED

- Inflator tire inflator bead expander; Kengrip Stand model K-2 snow tire stud gun; 3 Bar tire air fill cage; 2 Pedestal tire spreaders; 2 Meyers tork wrenches & socket sets; 30 Boxes assorted size inner tubes; 70 Boxes RADA assorted wheel weights; New boxes & sacks valve stems; Firestone & Bridgestone lighted signs; 2 - 65" portable wheel racks; 2 - 2 wheel tire carts; 10' Steel island tire rack

SHOP EQUIPMENT

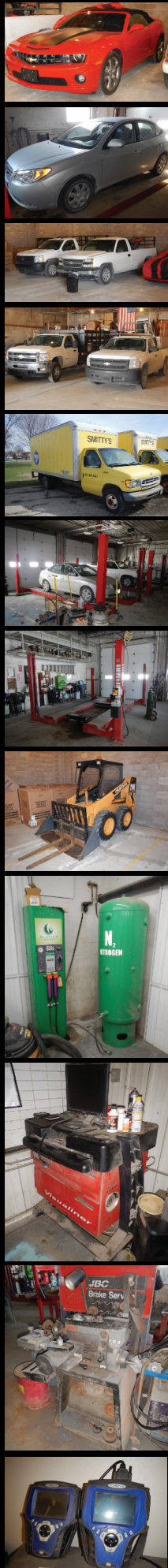
- 2 Gladiator 72" maple work tables
- Robinair 34788 refrigeration recovery, recycling & recovery system
- BG Products power steering service center
- BG Products CT2 coolant flush system
- BG Products PF7 brake service center
- BG Products PF5 transmission service center
- BG Products drive line service center
- Branick model 7200 strut & spring compressor
- 2 OTC SPX Genisys engine scanners
- John Dow 25 gallon portable gas caddy
- Midtronics 500 & 600 battery test
- Randor torch set w/ cart
- Fleetline 20 ton H-Frame hydraulic press
- Hobart Handler 175 mig welder, 220V, 1 ph
- Lincoln pneumatic oil filter crusher w/ stand
- Safety Kleen NF1000 ice breaker windshield washer tank w/ fill hose

SHOP RELATED

- 3 Winner RG350 - 3 1/2 ton floor jacks; Portable air bumper jack; 3 portable oil drains; 3 Ceiling mount air hose reels; Napa jack stands; 3 Security mirrors; Pedestal 8" bench grinder; National metal oil & seal cabinet w/ inventory; 8' steel shop work table w/ double vises; Misc. power & shop related tools; Mitchell service manuals; 5 Cases generic floor mat covers; Misc. oils & related items; 24' Fiberglass ext. ladder; 5' Portable warehouse stairs; Snapper L1226E snow blower, 11.5 hp

OFFICE EQUIPMENT

- Toshiba 32" flat screen TV; 13 Leather sled chairs; 2 Fire King fire proof 4 drawer filing cabinets; 8 Hewitt Packard DVD1260 CPU computer w/ 19" monitor; 2 - 7' x 7' L-Shape office desk; 60" Dark walnut office desk; 4 Metal double pedestal office desk; 6 Grey tweed conference room chairs; 7 office desk chairs; 5 - 4 drawer filing cabinets; 15 - 48" Metro wire wall shelving; NEC Telephone system w/ 10 phones; ETC digital time clock; 10 - 6' Plastic banquet tables; 5 - 8' Plastic banquet tables; 2 Door employee locker; 6 - 84" oak base cabinets; 2 Frigidaire dorm refrigerator; Sun Heat room radiant heater; 12 Store fixture displays



800-876-8070
 WWW.BACKES-AUCTION.COM
 RAYMOND, IOWA

TERMS: Full payment via cash or certified funds. Checks must be accompanied by a current bank letter of credit. No property removed until fully settled for. After the auctioneer has sold a piece of equipment, it becomes the sole responsibility of the purchaser. Any announcement made day of sale takes precedence over printed material. Everything sells as is, where is. No warranties. No guarantees. NOTE: The information contained in this brochure is subject to inspection and verification by all parties relying on it. No liability for its accuracy, errors, or omissions is assumed by the representatives of the seller, or Dick Backes Auctioneers. 13% Buyer's Premium in effect with 3% discount for cash/certified funds.



6605 Dubuque Road - Box 107
RAYMOND, IA 50667

**2011 CAMARO SS CONVERTABLE
SHOWROOM CONDITION**

Presorted
FIRST CLASS MAIL
U.S. Postage Paid
RAYMOND, IA
Permit No. 10

FORWARDING SERVICE
REQUESTED

SMITTY'S INC.
314 W. MAIN ST - MANCHESTER, IA

**VEHICLES, SKID STEER, HOIST, TIRE & SHOP EQUIP AUCTION
FRIDAY MAY 8, 2015 @ 10:00 AM**

AUCTION LINE:
1.800.876.8070
e-mail: backes@forbin.net
Visit Our Web Site:
www.backes-auction.com

Visit our Website - www.backes-auction.com

6605 Dubuque Road - Box 107
RAYMOND, IA 50667



MAY						
S	M	T	W	T	F	S
31						
24	25	26	27	28	29	30
17	18	19	20	21	22	23
10	11	12	13	14	15	16
3	4	5	6	7	8	9
	1	2				

Selling for secured creditors. Offering a great selection of excellent vehicles, skid steer, tire & shop equipment. 300+ new truck, car, fork truck & skid steer tires! Mark your calendars. Sales tax applies to all purchases. 10% buyer's fee

SMITTY'S INC.
314 W. MAIN ST - MANCHESTER, IA

**VEHICLES, SKID STEER, HOIST, TIRE & SHOP EQUIP AUCTION
FRIDAY MAY 8, 2015 @ 10:00 AM**

