

SKID STEER, FORK TRUCKS, PAINT BOOTH, WATER JET, FABRICATION & WELDING AUCTION

LRT FABRICATING

101 Technology Drive • Evansdale, Iowa

Tuesday, September 24th at 10 AM

ON LINE ONLY AUCTION. Owner retiring and building is sold. Complete liquidation of this 30,000 sq. ft. building loaded with fabricating & welding equipment. This sale offers something for everyone! Everything sells regardless of price. Viewing: Monday September 23 from 9:00 to 4:00 PM. 18% buyers fee. In conjunction with SMC Auctions, Ames, IA.

SKID STEER & FORK TRUCKS

2002 Case 70XT skid steer w/ 65" low profile bucket, newer rubber, 346 hours on new meter. Approx. 8500 hours on machine, s/n JA0371338

2008 Mitsubishi FGC25N 4500# fork truck, side shift, 3 stage mast, 188" lift, 3,439 hours, LP gas, no tank, s/n AF82F01356, truck stays until fri. for load out

2006 Hyster 850FT Fortis 4800# fork truck, LP gas, no tank, side shift, 3 stage mast, 171" lift, 8,334 hours, s/n F187V01433B

1999 Yale GLC030AF 3000# fork truck, LP gas, no tank, 3 stage mast, 189" lift, 9066-hour, s/n GLC030AFNUAE082, truck stays until fri. for load out

Clark C-300-40 fork truck, 3000 #, LP gas, no tank, 3 stage mast, 130" lift, used in paint booth, covered in green paint

GOLF CART - LAWN MOWERS & TRAILERS

1993 Club Car gas golf cart, s/n AG9337349350

2003 John Deere X475 gas riding mower w/ 54C convertible deck, 1,078 hours, s/n M0X475A020084

1996 John Deere 345 riding mower w/ 48" deck, no hour's meter, broken hood, Rough s/n M00325B022020

8' x 21' Tandem axle trailer w/ 3 side rails, 3500# axles, bumper hitch

FLOW JET

1998 Flow Jet Flying Bridge waterjet cutting system w/ Jet Edge 55-75 pump, 75 hp. 9500 hours on pump, 500# abrasive pot, 4' x 8' cutting capacity, Flow Robotics monitor & controls, 55,000 psi,

PAINT BOOTH

Standard Tool 14' x 27' x 11' high paint booth w/ 13 explosion proof lights, updraft exhaust fan, Amerex dual tank IS35ABC tanks, 10' wide double door opening, peel-able (removable) booth coating on interior

WELDERS

8 Miller CP-302 power sources w/ Miller 60 & 70 series wire feed on carts, 3 ph.

Miller Shop Master 300 power source w/ Miller 60 series wire feed on cart, 3 ph.

Miller MillerMatic 251 mig welder, 1 ph.

ESAB Power Cut 1250 plasma cutter, 3 ph.

4 Radnor & Harris torch sets w/ Harper carts

35 assorted size welding & fabrication tables

SHED & RAGERS WOOD STAND

8' x 8' Utility shed, insulated, window air cond., 32 x 72" window, 2 side windows
4' x 32' x 14' tall womanized lumber drivers viewing tower w/ 4) 42" x 96" car work stations. Buyer to disassemble & remove from property.

OFFICE EQUIPMENT

John Deere Limited Edition pedal car fire truck new in box, pre 1998, paid \$250 for it; 3) Wood L-Shape office desk; 3) Leather desk chairs; office chairs; Lateral filing cabinets; 3) wood 2 door office cabinets; Cranky slot machine (as-is); Xerox 6120 laser printer; 14" paper cutter; Marsh R-1 stencil label maker; Pyramid Time Trax 5.0 time clock w/ badge swipe; 36" plastic wall shelving; Banquet table w/ 6 chairs; Hot Point refrigerator; Nemco hot pizza display cabinet;

FABRICATION & SHOP EQUIPMENT

Foremost Bantam model 624 - 72" pneumatic 24-ton press brake, 2" stroke, manual back, gauge, foot control, s/n 5823166

ACRA model FS5210H - 52", 12 ga. Shear, manual back gauge, s/n 970333, foot control, 1 ph.

3 Wellsaw 1016 metal band saw, s/n 4665, s/n 4342 & s/n 4716, 2 hp, 3 ph.

Ellis 1600 metal band saw, 1 ph.

Jet ¾ hp. Metal band saw, 115 volts

2 Metal Pro 45-ton iron workers

Cincinnati 15 hydra shift metal lathe, 30" gap bed, 15" swing, 3 & 4 jaw chucks, Aloris tool post, 3 ph.

Bridgeport end mill, 9" x 42" table, power feed, Anilam X, Y digital read out, s/n J239648, 3 ph.

Logan tool rm lathe w/ base, 24" bed, 3&4 jaw chucks, 10" swing, bit dr, 1 ph.

2007 Delta 28-640 metal band saw w/ 18" throat, 1 ph.

Ellis 9500 drill press w/ 16" x 18" drill table & variable spd ctrl, s/n 95D05059

Ellis 9400 drill press w/ 16" x 18" drill table & variable speed control, needs new motor s/n 94D07134

Delta 70-200 drill press w/ 16" x 18" drilling table

Craftsman drill press w/ 14" x 14" drilling table

Ingersoll Rand TS4NS 80-gallon vertical air compressor, 5 hp, 1 ph.

Ingersoll Rand T30 - 120-gallon horizontal air compressor, 10 hp, 3 ph.

5 Justrite1 & 2 door flammable cabinet

SHELVING & RACKS

4 - 42" x 8' sections pallet shelving 8' & 12' high

50" x 10' section pallet shelving 16' high w/ 7 shelf's

54" section pallet shelving 12' high

24" x 10' pallet wall shelving 5' high, 5 shelves'

3 - 8' Cantilever 5 shelf metal wall shelving 7' high

15' Cantilever 7 shelf wall shelving 7' high

15' Cantilever 12 shelf wall shelving 14' high w/ removable shelves

2) 10' & 1) 8' floor mount metal saw horses

12' Portable 4 shelf cantilever shelving 4' high

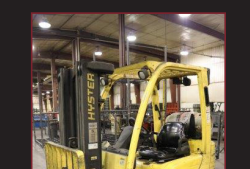
24" & 36" Portable 3 tier cantilever shelving

SHOP - HAND & POWER TOOLS

Kohler 6.5 hp portable gas air compressor; Kohler 6.5 hp 3" water transfer pump; Kohler 14 hp Series 10,000 portable gas generator; Kohler Tri-Plex 9200 portable gas generator; Craftsman Laser Trac 10" radial arm saw; Craftsman Professional 10" table saw w/ Biesemeyer fence; Waterloo Industries 15 drawer tool cabinet; 5 Craftsman 11 drawer tool chest & cabinets; 3) 10 & 20 ton Porta Power kits; Hougren HMD904 magnetic drill; 7 Milwaukee & DeWalt 4" hand grinders; Milwaukee power band saw; 3 Milwaukee 6230 - 8" metal circular saws; 5 DeWalt 18 volt batteries w/ impact guns; 6 DeWalt 1/2" electric drills; DeWalt & Milwaukee Sawzall's; Milwaukee right angle drill; Williams 48" hand brake on table w/ 6" belt & 12" disc sander; Wilton & Bridgeport drill vises; collets; tool holders; slugger drills; vise grip; assorted hand & power tools; C-Clamps; drills; 44 hole nut & bolt cabinet; 2 banding carts w/ tools

TERMS: Full payment via cash or certified funds. Checks must be accompanied by a current bank letter of credit. No property removed until fully settled for. After the auctioneer has sold a piece of equipment, it becomes the sole responsibility of the purchaser. Any announcement made day of sale takes precedence over printed material. Everything sells as is, where is. No warranties. No guarantees.

NOTE: The information contained in this brochure is subject to inspection and verification by all parties relying on it. No liability for its accuracy, errors, or omissions is assumed by the representatives of the seller, or Dick Backes Auctioneers. 18% online buyers fee. No discount.



CHECK US OUT ON FACEBOOK & OUR WEBSITE

BACKES AUCTIONEERS & REALTY
800 - 876 - 8070
WWW.BACKES-AUCTION.COM | RAYMOND, IA

IN CONJUNCTION WITH
SMC AUCTIONS • LIQUIDATIONS • APPRAISALS
866-961-3211