

# EXCELLENT TIRE REPAIR SHOP & NEW TIRES AUCTION

## IOWA TIRE

1606 North 14th Street, Indianola, IA

Owners have closed this location and will be offering the following at public auction. This is a great line of tire repair equipment along with 10,000# hoist along with a large selection of new tire inventory and front offices. Make plans to attend this great auction! Sales tax on new inventory only. 10% buyers fee.

### Saturday, January 21<sup>st</sup>, 2012 at 10:00 AM



#### TRUCK

1997 Chevy 2500 Silverado pickup truck – 152,421 miles – 2 door extended cab – 8' box with rack

#### TIRE EQUIPMENT – HOIST - SHELVING

Magnum Lift WL – OE-10 – 10,000# 2 post hoist – 1 phase – nice  
Coats APX80E tire changer – electric - heavy duty unit

Coats 5060AX rim clamp tire changer  
Coats XR1800 wheel balancer - nice  
Coats 950 Solid State Direct Drive wheel balancer  
Ammco 385 rotor lathe  
Nitrogen Inflate System – 89-TRL-4B  
2 Cheetah CH-5 bead seaters  
Branick 7200 strut compression unit  
Branick TC barrel cart  
44" x 54" x 24" steel wash basin  
2 Dorco 2 ton floor jacks  
3 AID 3 ton floor jacks

2 Craftsman 4 ton floor jack  
PTJ-2000 ½ ton transmission jack  
Oil catch can with stand  
John Beam Visualiner w/eyes – not in use – as is  
36" wide x 6' tall inventory rack with bins  
4) 42" wide x 8' wide x 8' tall tear drop pallet shelving  
18" wide x 40" long x 12' tall – tire display pallet shelving  
8 portable warehouse steps

#### SHOP RELATED & TOOLS

60" dock plate; 2) 36" wire racks; Skilsaw; Hitch and chain; Davidson 6' step ladder; AC Delco creeper; Quantity wheel weights; 7' wood base cabinet; 3 CP 797 pneumatic air wrench; 3) ½" air wrenches – IR & CP; CP 10 piece 1" to 1 ½" impacts; Bottle jacks; impact sockets; Craftsman 8 drawer mechanics tool box; Craftsman 3 drawer roll away tool box; Speed wrenches; 2 air reels; Barrel pump; Weed eater; Explosion rack; Airmaster 42" floor fan; 16' aluminum; extension ladder; 20' aluminum extension ladder; 2 Spectrum laser pipe levels; 3" trash pump; MORE

#### DISPLAY RIMS & TIRES - WAITING ROOM – TV'S – POP MACHINE

Continental neon clock; 6 plastic lounge chairs; 60" coffee table; Pepsi Lacrosse 12 product bottle dispenser; Vizio 32" flat panel TV with bracket; Gladiador double work cabinet with heavy duty top; Lasko floor heater; Area rug; Continental 48" lighted sign; Kumho Tires wall tin; Samsung 42" flat panel monitor with bracket; 10 wall mount tire display units; 55" x 55" front service counter – diamond plate look; Royal Alpha 587 cash register; General Tire sign; Cooper Tire Tin; Chefmate microwave; GE refrigerator; Wood 6' tall gas pump with globe; Eagle LS-2 rim with tire – display; General Grabber AT2 tire – display; Good Year Wrangler tire – display; Mud Star Radial M/T display; XD Series 20" black rim – display; Moto Metal 18" black rim – display; R1 – 20" aluminum rim – display; Earnhart Jr American Racer 18" aluminum rim – display; KMC 20" aluminum rim – display; XD Star 20" aluminum rim – display; KMC 20" aluminum rim – display; American Racer 20" aluminum rim – display; XD black 16" rim – display; Moto Metal 16" aluminum rim – display; H 20" black rim – display; 2) 28" black metal rim display racks; 7 new display tires

#### OFFICE & COMPUTERS

Several computer units - Brother Intellifax 2820L Lateral 5 drawer file cabinet; 2 burgundy office chairs; 6' x 7' office U shaped desk; 36" metal rack; 2) 60" steel desks; 4 office chairs; 2) L shaped office desks with typing returns; 30" wide metal and glass rack; Dell 2330dn laser printer; Brother 2920 Intellifax; security system – 2 color cameras – 16 camera dvr; 4 drawer lateral file cabinet; LG cpu with XP Pro;

#### NEW TIRE INVENTORY

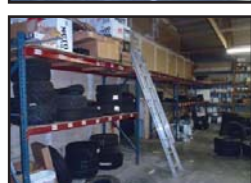
**Majestic Tires:** 2) P235/75R15 – 8) P215/75R15 – 4) P205/70R15 – 3) P195/65R15 – 4) P205/55R16 – 6) P185/75R14 – 9) P195/75R14 – 5) P205/75R14 – 4) P215/75R14 – 4) P175/65R14 – 4) P175/65R14 – 6) P225/75R15 – 2) P215/70R15 – 4) P175/70R13 – 7) P215/65R15 – 7) P185/70R14 – 6) P195/70R14 – 2) P215/70R14 – 4) P185/65R14 – 6) P155/80R13.....

**Delta Tires:** 4) 215/60R17 – 3) 195/60R15 – 2) 265/75R16 – 2) 235/65R11 – 4) 225/55R17; Wintermark P205/75R14; 2 Marshall P185/65R15; 4 Nexen AT11 LT245/75R16

**Goodyear (GY) & Wrangler (W):** 4) GY 245/60R18 – 4) GY P205/65R16 - 2 W SRA LT 265/60R20 - 2 W SR-A 275/65R18 - 3 GY HP P215/60R20 - 4 GY HP P265/70R17 - 2 GY 225/60R16 - 6 GY Fuels 225/60R16 - 4 GY Eagle AS-A P225/60R16 - 2 Eagle RSA P205/55R16 - 2 W LS2 P225/65R16 - 4 W RT/S P225/75R15 - 3 W HP P265/70R17 - 4 Goodyear Wrangler LT 285/75R16 - 4 Goodyear AT/S LT 275/65R20 - 4 GY AT/S - LT275/65R18 - 6 W P235/75R15 - 4 W AT/S P265/70R17 - 2 Eagle GT11 P285/50R20 - 4 Ass Fuel 255/65R17 - 4 Ass Fuel Mix 265/70R16 - 4 W Radial P215/75R15 - 6 GY P285/60R16 - 4 GY Int. P215/65R17 - 4 GY Int P225/65R17 - 4 Eagle RS/A P205/55R16 - 4 W SR-A P215/65R17 - 2 GY Int P225/70R16 - 2 Eagle RS-A P235/55R17 - 3 GY LS-Z P225/50R18 - 5 W ST P225/75R16 - 4 W ST P235/75R15 - 4 ASS Fuel Mix 235/65R16 - 4 ASS Fuel Mix P215/65R17 - 2 Mud King XT 32/11.50R15LT - 2 W SA P265/70R16 - 4 Eagle P185/60R15 - 4 Eagle LSZ P195/65R15 - 4 GY Int P215/65R17 – More unlisted Goodyear

#### IMPLEMENT & MORE NEW TIRES - RIMS

2 **Hancock** Vent K106 215/35R18 - 2 Hancock V12EW 225/45R19 - 2 Hancock H406 P185/65R14 - 3 Hancock H727 P185/60R15 84T - 48 Misc new tires - 6 Nokian 225/65R16 - 4 Geo Tracker XLT A/P LT285/75R16 - 3 **Cyclone** SUV 255/70R16 - 4 Cyclone Ultra 215/65R17 - 6) HP259 235/50R17 - 2) HP259 225/50R17 - 2) HP259 P195/65R - 3) P195/60R14 - 3) 215/55R17 - 6 **Forteras** 8L 285/45R22 - 4 Forteras 285/45R22 - 2 **Integrity** P225/60R16 - 8 Integrity P215/70R15 - 3 Integrity P225/60R17 - 2 Forteras HL P255/65R18 - 4 Forteras P245/60R18 - 4 Dunlop Grand AT/0 P215/75R16 - 3 **Akuret** ST205/75R15 tires - 2 Akuret Harrow Tread 11L-158 implement tire - 2 Akuret ST 175/80R13 tires - 2 Goodyear 7.60-155L implement tire - 3 Master Track ST205/75R14 - 2 Denman 7.50-15TR implement tires - 2 American Farmer implement tires - BKT Pro Rib 10-165L implement tires - Akuret 9.5L-15 implement tire - 3 Akuret 6.5-16 harrow tires - 3 Carlisle tubeless 10-16.6 NHS Track Chief XT tires - 25 small lawn and garden tires - Large quantity of stems and lug nuts - misc. tubes – as is - 8 misc. new tires - 5) 16" 8 bolt rims - 6) 16" 6 bolt rims - 8) 16" 6 bolt rims - 40+ misc rims - 40 assorted new implement tires, asst. used tires.



Don't miss this sale!

TERMS: Full payment via cash or certified funds. Checks must be accompanied by a current bank letter of credit. No property removed until fully settled for. After the auctioneer has sold a piece of equipment, it becomes the sole responsibility of the purchaser. Any announcement made day of sale takes precedence over printed material. Everything sells as is, where is. No warranties. No guarantees.

NOTE: The information contained in this brochure is subject to inspection and verification by all parties relying on it. No liability for its accuracy, errors, or omissions is assumed by the representatives of the seller, or Dick Backes Auctioneers. 10% Buyer's Premium in effect.