

Excavator, Skid Steers, Scissors Lifts, Trenchers Concrete, Trucks & Trailer Auction

Central Electric Company
15 Vermeer Road, Pella, Iowa

Complete liquidation of all excellent well maintained equipment. We will be selling in 2 rings early with one selling hand tools and the other selling electrical inventory so bring a friend. Over \$40,000.00 dollars in electrical inventory. Large equipment to sell at 11:30 AM. 10% buyers fee

Thursday, September 9th, 2010 at 9:00 AM



TRUCKS

2006 Chevy 1500 regular cab truck, 2 WD, auto, 144,107 miles
2000 Chevy K3500 ¾ ton truck w/ Hidro Grubert BL-13CA bucket truck and Honda 5.5 hp gas motor, 26,756 miles
1996 Ford Econoline E350 gas cargo van w/ 3 rear bench seats, 131,026 miles
1991 Ford F350 Custom 4 door crew cab truck w/ ladder rack, auto, diesel, 155,527 miles
1990 Ford F250 regular cab truck w/ ladder rack, 8' box, 94,362 miles
1980 International dual single axle 10' dump truck w/ knuckle boom & outriggers,
1979 Ford F800 single dual axle 55' bucket truck, fiberglass bucket, outriggers,
1978 Chevy C60 straight truck, dual single axle, 91" x 22' stake bed, 5 spd, 32,575 miles
Columbia gas 2 seat golf cart
Truck mount 5th wheel plate

TRAILERS

2000 Redi Haul 16' tandem axle 12,000# trailer w/ 2' beaver tail & ramps, wood deck
1993 Redi Haul 74" x 12' single axle 10,000# tilt bed trailer
1994 Doolittle 12' single axle enclosed trailer, double rear doors
1990 80" x 16' tandem axle 7000# utility trailer
1978 Vermeer 67" x 10' single axle 3500# tilt bed trailer w/ steel deck, fold down ramp
95" x 16' tandem axle 7000# steel deck utility trailer,
1976 American 8' x 40' semi van trailer w/ double rear doors, 54,000#
1973 Fruehauf 8' x 37' semi van trailer w/ roll up door, 38,000#
1971 Trail Mobile 42' semi van trailer w/ double rear doors
1995 Independent Trailer single axle jobsite trailer w/ 7' x 8' office & rear storage
8' x 17' American dual single axle jobsite trailer w/ rear storage
8' x 20' tandem axle job site storage trailer w/ doors
2002 Homemade 20' tandem axle 7000# enclosed trailer w/ rear doors
Mercedes Benz 78" x 10' single axle utility trailer, 3000# axle
2002 Maxwell 4' x 9' single tilt bed utility trailer w/ steel deck

CONSTRUCTION EQUIPMENT

2001 Mustang 2022 skid steer loader, 36 hp, front hydr, 1083 hours, sn SK01G000259
Vermeer V430 trencher backhoe, 12" bucket, V-16 5" trencher, 60" front blade, 1598 hrs
Vermeer V450 trencher backhoe, 18" bucket, V-18 9" trencher, 68" front blade, 2144 hrs
Vermeer V1350 6" walk behind trencher w/ Briggs & Stratton gas motor
1995 Genie Z451/22 electric 2 person man lift, sn 7-45-03035, DC power
Wildcat 2032 electric scissors lift, 184 hours, 20' lift
Skyjack 3220 electric scissors lift, 966 hours, 20' lift
Economy 492 gas scissors lift, 5' x 15' working platform, foam filled tires, 950 hours
Economy 492 elec. scissors lift w/ 5' x 15' working platform, foam filled tires, 1320 hrs

ELECTRICAL RELATED

Greenlee 555 conduit speed bender from ½" to 2"; Greenlee 755 hydraulic conduit bender w/ 980 hydraulic pump, and hand pump, bends to 3"; Greenlee Super Tugger 6000 cable pullers; Greenlee 881CT conduit bender; 6 Greenlee 687 screw type reel sands; 2 Greenlee 683 screw type reel stands; 2 Greenlee 911 wire carts; 3 Greenlee 905 wire caddy's; Greenlee 690 fish tape blower vac; Ez Bend model EZ-6 PVC pipe bender; 5 Knaack 2) Job Site & 1 Delta portable job site locking tool boxes; 8 Aluminum jobsite portable blue print tables; quantity hand conduit benders; 7 temporary electrical stands; Portable jobsite locking cage; Werner 10' & 12' fiberglass step ladders; 6 Louisville 3' - 6' & 8' fiberglass step ladders; Louisville 2) 20' - 2) 24' & 26' fiberglass extension ladders; 10 rolls of rope;

CONCRETE EQUIPMENT

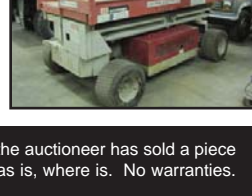
Allen Razorback 26' concrete screed w/ Honda 8 hp gas motor
Eddy Walker portable concrete buggy w/ Wisconsin motor
2 Partner 700 gas concrete quickie saws
SMI electric concrete saw, 10hp 3 phase motor, 14" blade
Target gas concrete saw w/ Wisconsin motor - needs work
Mikasa MT-74F jumping jack packer
Little Beaver gas 12" post hole auger w/ Honda 3 hp motor

SHOP EQUIPMENT

Bobcat 225 portable 8000 watt generator welder w/ Onan 16hp motor; Rigid 802 power pipe threader w/ pipe cutter, reamer, & head; Ridgid 141 threading head; 2 Rigid pipe stands; Hotsy 2 hp electric power washer w/ 3 stage pump; 3 Milwaukee metal chop saws; 48" hand brake; Sears radial arm saw; John Deere 3200 portable generator; 3 Power Train 2000watt gas generators; older portable 10hp generator; Coleman 1850 gas portable generator; Salsco 30-6 lawn aerator w/ Briggs 5 hp gas motor; Ingersoll Rand DXR35 air line dryer; portable banding cart; Solar battery charger; retractable air hose; 10 semi load jacks; shovels; rakes, pitch forks;

ELECTRICAL INVENTORY

Over 750 running feet of electrical inventory to include: 100's rolls new THHN stranded & solid wire; Plastic under ground & galvanized conduit to 4"; ¾ roll of schedule 40 Blue Diamond PVC underground conduit; large quantity schedule 40 & 80 under ground conduit to 4"; 50 large rolls assorted gauge electrical wire; breakers; wiring kits; fuses; screws, bolts & nuts; flex conduit; plastic junction boxes; sealite connectors to 4"; plastic & metal electrical boxes; receptacle plugs, switches & covers; aluminum & plastic body's to 4"; misc light fixtures; incandescent light fixtures; boxes florescent lights; transformers; parking lot lights; can lights; several boxes of new & used temporary strip lighting; aluminum louvers; 100's electrical disconnect boxes; service boxes & panels; thermostat wire; CAT 5 & 6 wire; PVC fittings; 20 new Racket Ball 2' x 4' florescent light fixtures; Dog cage on 6 x 6 rails w/ cage; 12" x 6' w/ 6' wire cage



TERMS: Full payment via cash or certified funds. Checks must be accompanied by a current bank letter of credit. No property removed until fully settled for. After the auctioneer has sold a piece of equipment, it becomes the sole responsibility of the purchaser. Any announcement made day of sale takes precedence over printed material. Everything sells as is, where is. No warranties. No guarantees.

NOTE: The information contained in this brochure is subject to inspection and verification by all parties relying on it. No liability for its accuracy, errors, or omissions is assumed by the representatives of the seller, or Dick Backes Auctioneers. 10% Buyer's Premium in effect.